

zach zdun

DESIGNER

MAKER

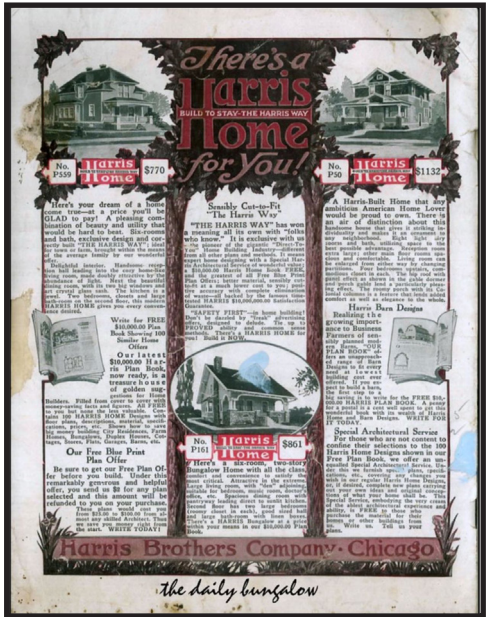
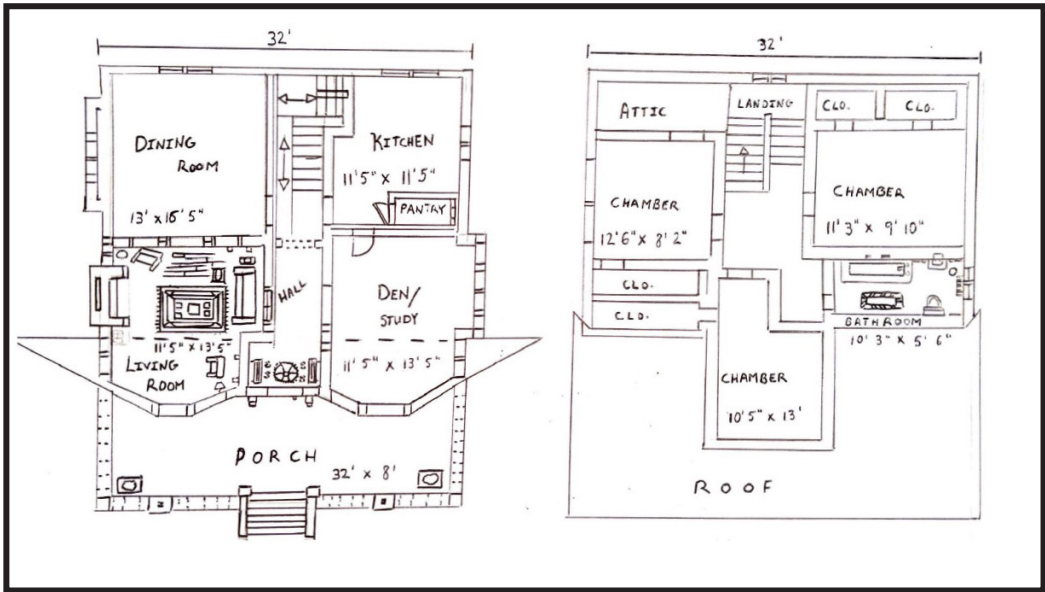
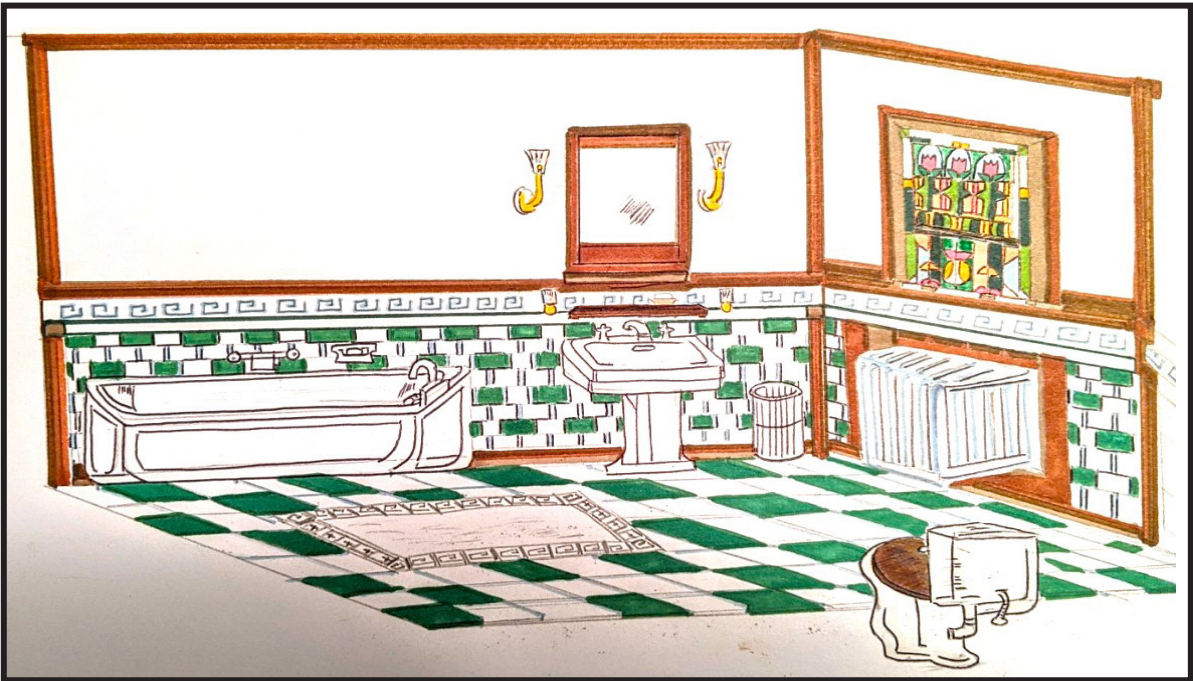
STORYTELLER

Let's make something memorable.

www.zachzdun.com zzdun754@gmail.com 715-897-4580

@zachzdun [linkedin.com/in/zach-zdun-205869ab](https://www.linkedin.com/in/zach-zdun-205869ab)

Harris Houses: A Case Study on Craftsman Bungalows



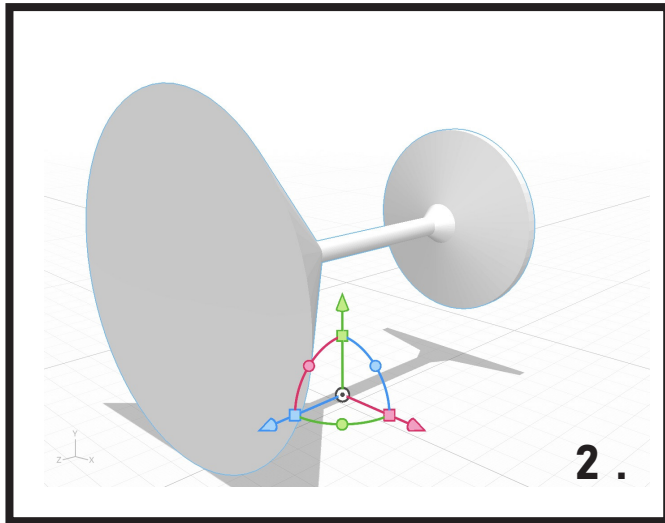
Top Left: Hand rendering of the Harris House dining room using Prismacolors, pencil, and ink.

Bottom Left: Hand rendering of the Harris House bathroom using Prismacolors, pencil, and ink.

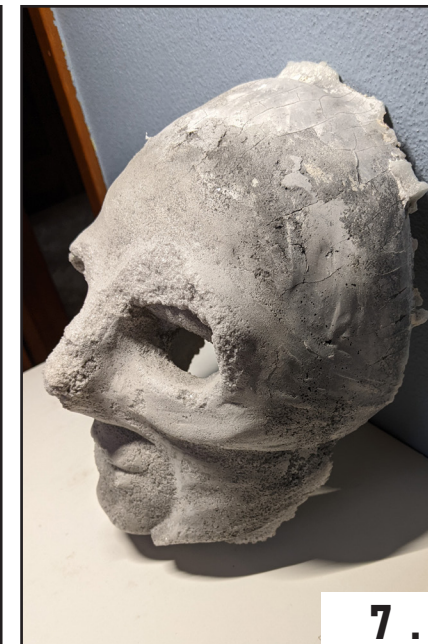
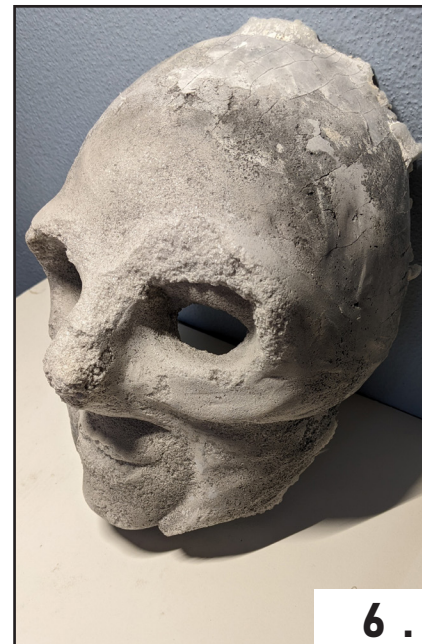
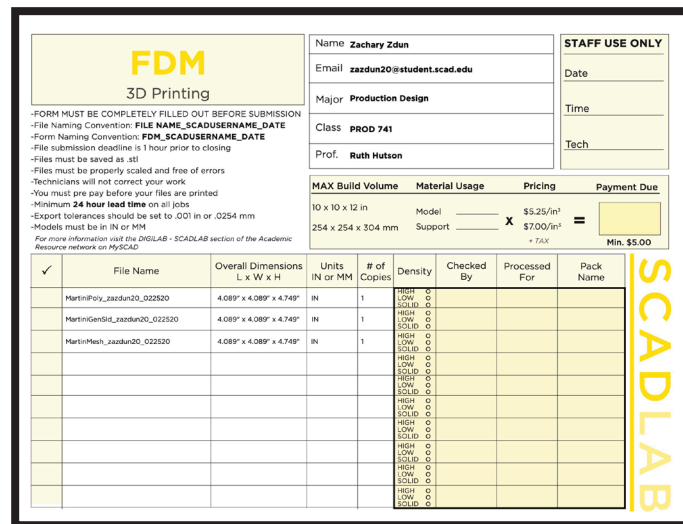
Middle : Hand drawn plan of Harris House No. M-1516.

Bottom Right: Early advertisement for Harris Homes in *The Daily Bungalow* magazine.

3D Printed Martini Glass, Latex Prosthetic, & Paté de Verre Mask



4. : Front View of finished 3d printed martini glass.



NOTE: Pat'e de verre is the process of creating a paste from ground glass and fusing it to a molded form at extremely high heat.

3.



Select Photoshop Renders for
American Gods, Season Three
Episode One, Henning's Sporting Goods.

Top Left and Right Side :
Select Interior Renders,
Hinzelmann's General Store

Middle : Select Exterior Wall Detail,
Henning's Sporting Goods

Bottom : Select Exterior Render,
Henning's Sporting Goods

American Gods : Renders of Henning's Sporting Goods

Written by Neil Gaiman and later adapted to screen by Showtime, *American Gods* tells the story of America through the mythological, secular, and religious views found in present-day America.

While the novel discusses many parts of America, the Midwest takes center stage as I chose to focus on redesigning two sets from the fictional town of Lakeside, Wisconsin.

American Gods Season Three Episode Two :

Set Drafting for
Henning's
Sporting
Goods

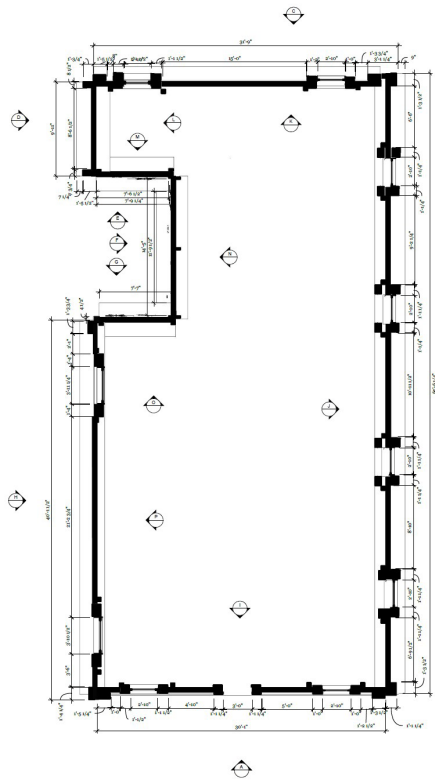


Figure 39: Henning's Sporting Goods, Ground Plan Drafting, SketchUp & Layout, Zach Zahn, 2022

PRODUCTION	American Gods S3 Episode Two	DATE	November 15, 2022	SHEET	2
DIRECTOR	Julian Holmes	SCALE	1/4" = 1'	REVISIONS	1
PRODUCTION DESIGNER	Zach Zahn	DATE			
LOCATION	Henning's Sporting Goods Redesign	DATE			

Top Left: Ground Plan

Bottom Left: Window
and Casing Details

Top Right: Exterior Front
Elevations & Section Cuts

Bottom Right: Interior Front
Elevations & Section Cuts

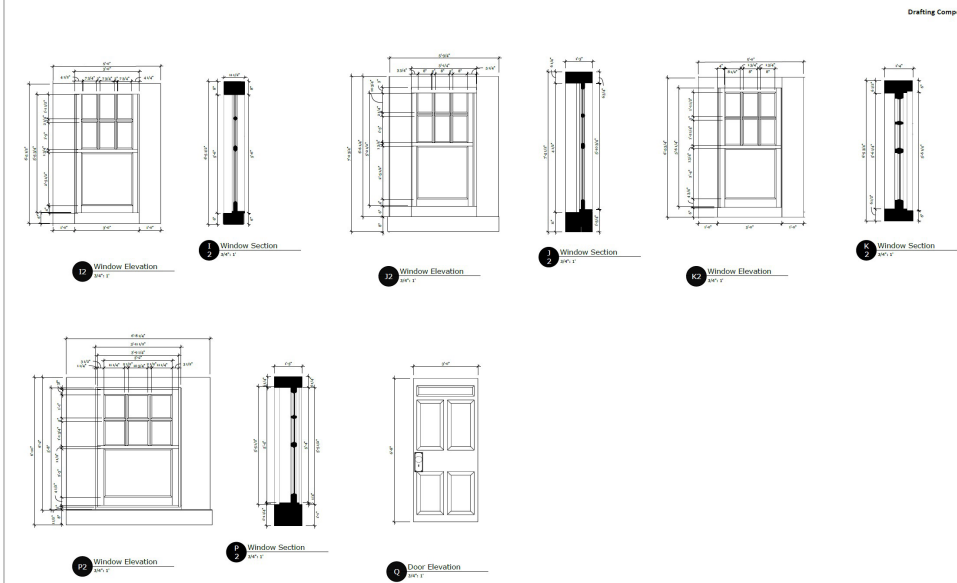


Figure 40: Henning's Sporting Goods, Interior and Exterior Wall Details Drafting, SketchUp & Layout, Zach Zahn, 2022

PRODUCTION	American Gods S3 Episode Two	DATE	November 15, 2022	SHEET	2
DIRECTOR	Julian Holmes	SCALE	1/4" = 1'	REVISIONS	7
PRODUCTION DESIGNER	Zach Zahn	DATE			
LOCATION	Henning's Sporting Goods Redesign	DATE			

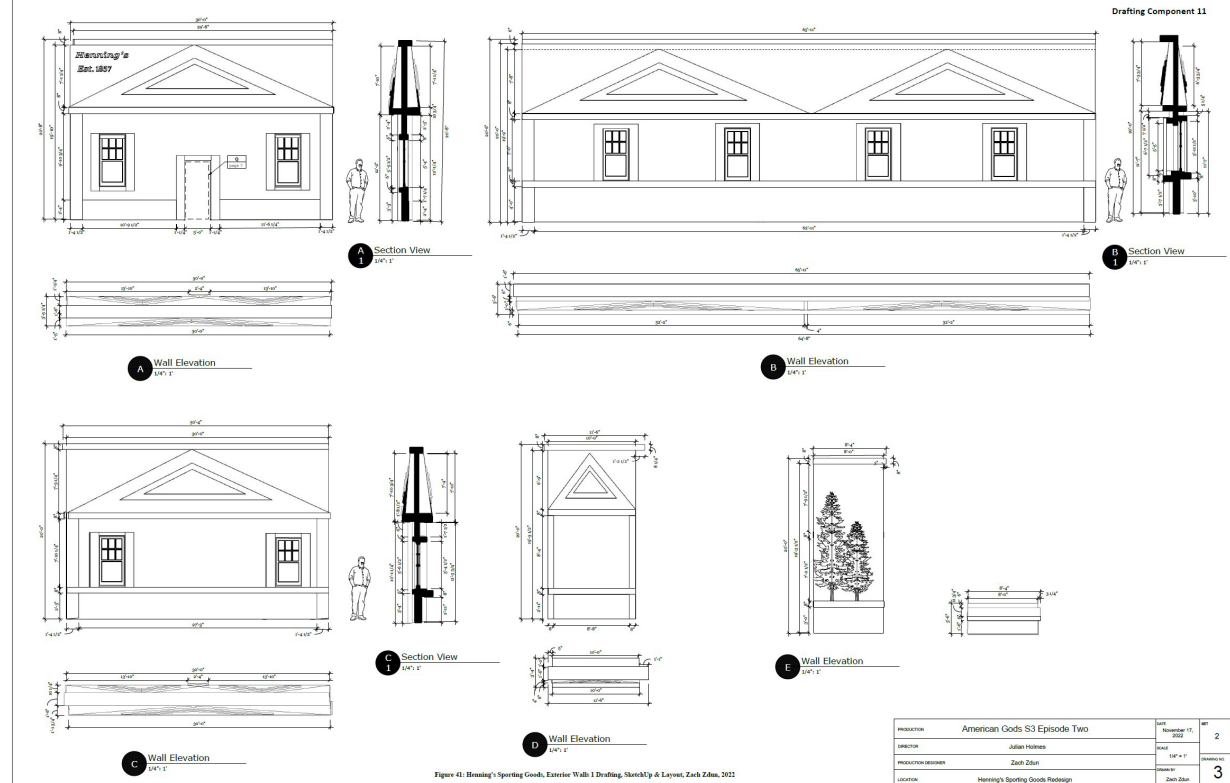


Figure 41: Henning's Sporting Goods, Exterior Walls 1 Drafting, SketchUp & Layout, Zach Zahn, 2022

PRODUCTION	American Gods S3 Episode Two	DATE	November 15, 2022	SHEET	2
DIRECTOR	Julian Holmes	SCALE	1/4" = 1'	REVISIONS	3
PRODUCTION DESIGNER	Zach Zahn	DATE			
LOCATION	Henning's Sporting Goods Redesign	DATE			

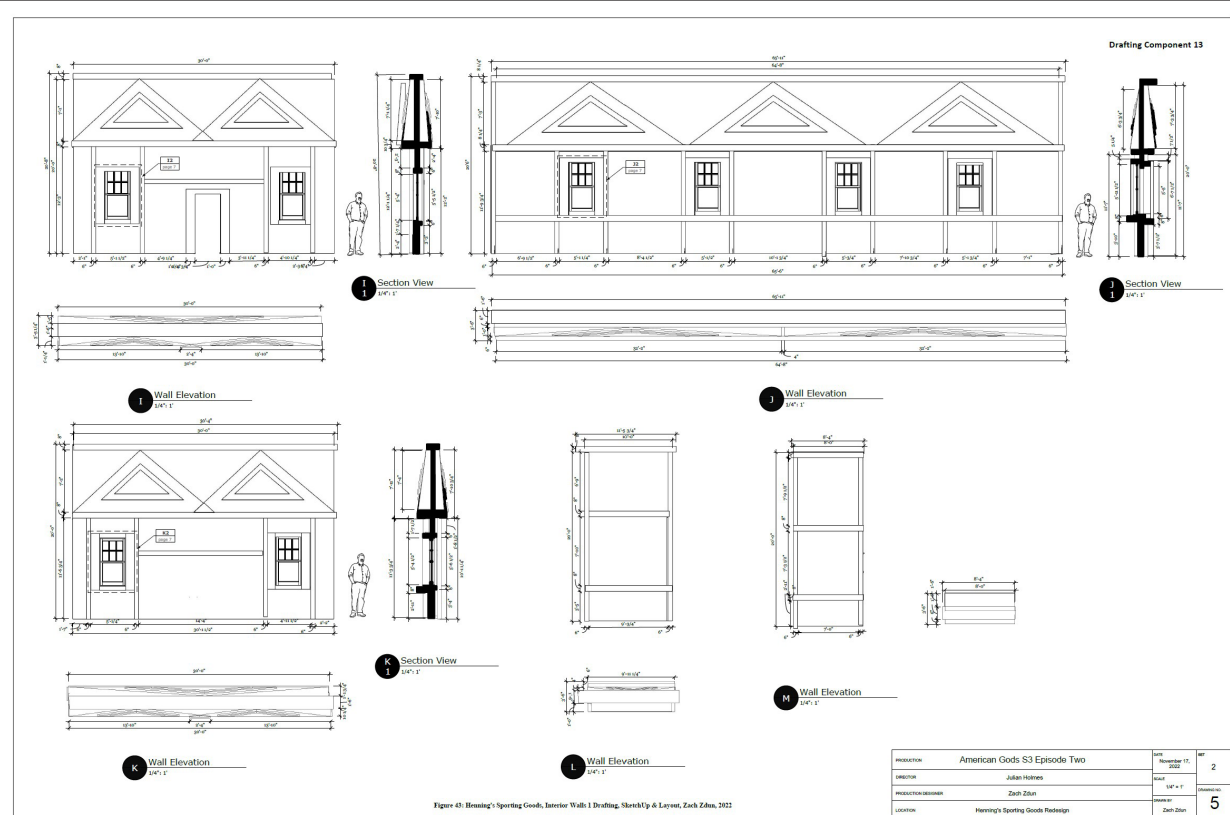


Figure 42: Henning's Sporting Goods, Interior Walls 1 Drafting, SketchUp & Layout, Zach Zahn, 2022

PRODUCTION	American Gods S3 Episode Two	DATE	November 15, 2022	SHEET	2
DIRECTOR	Julian Holmes	SCALE	1/4" = 1'	REVISIONS	5
PRODUCTION DESIGNER	Zach Zahn	DATE			
LOCATION	Henning's Sporting Goods Redesign	DATE			

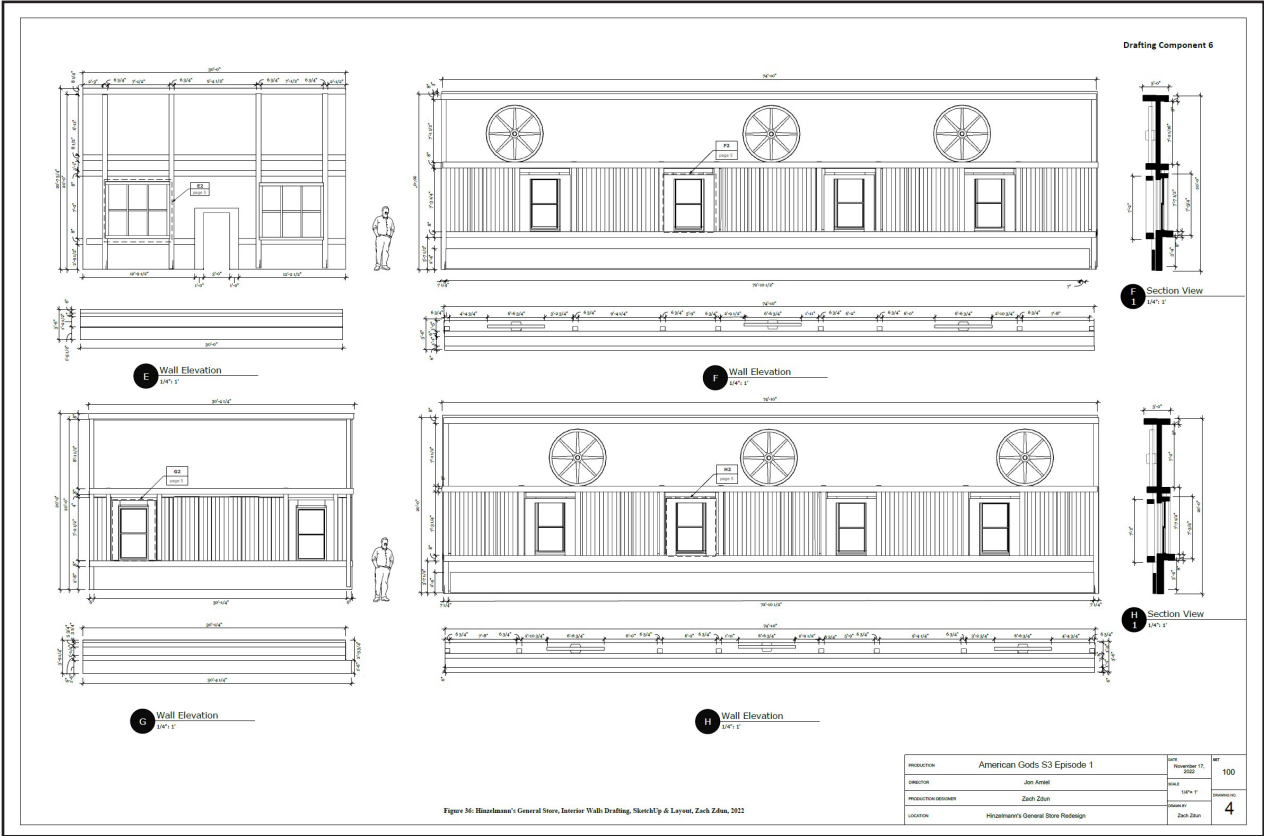
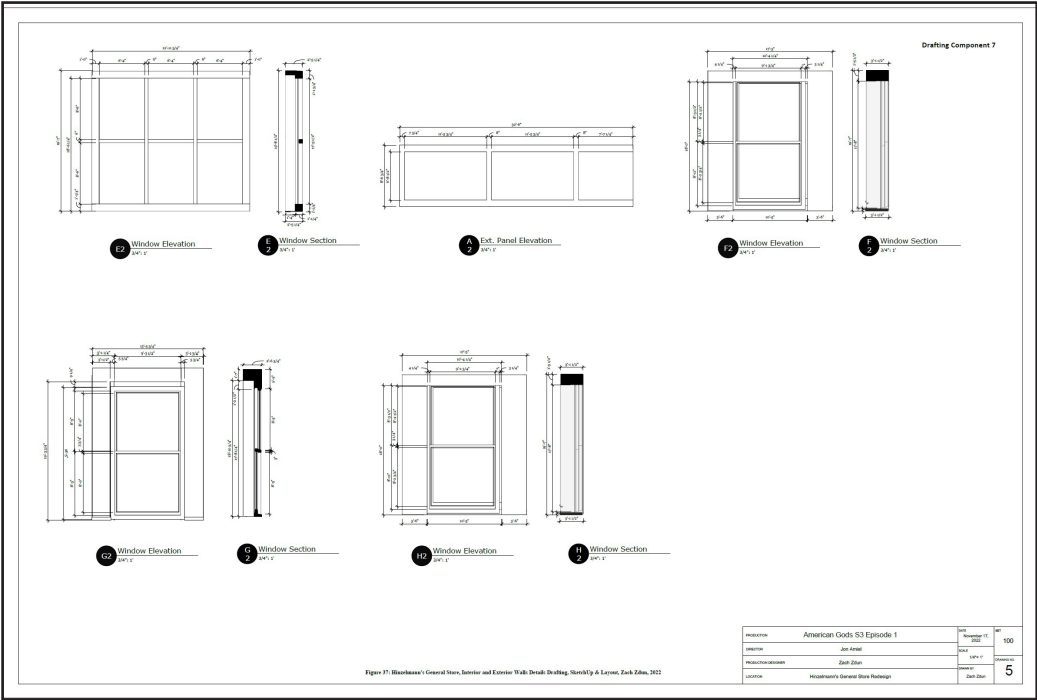
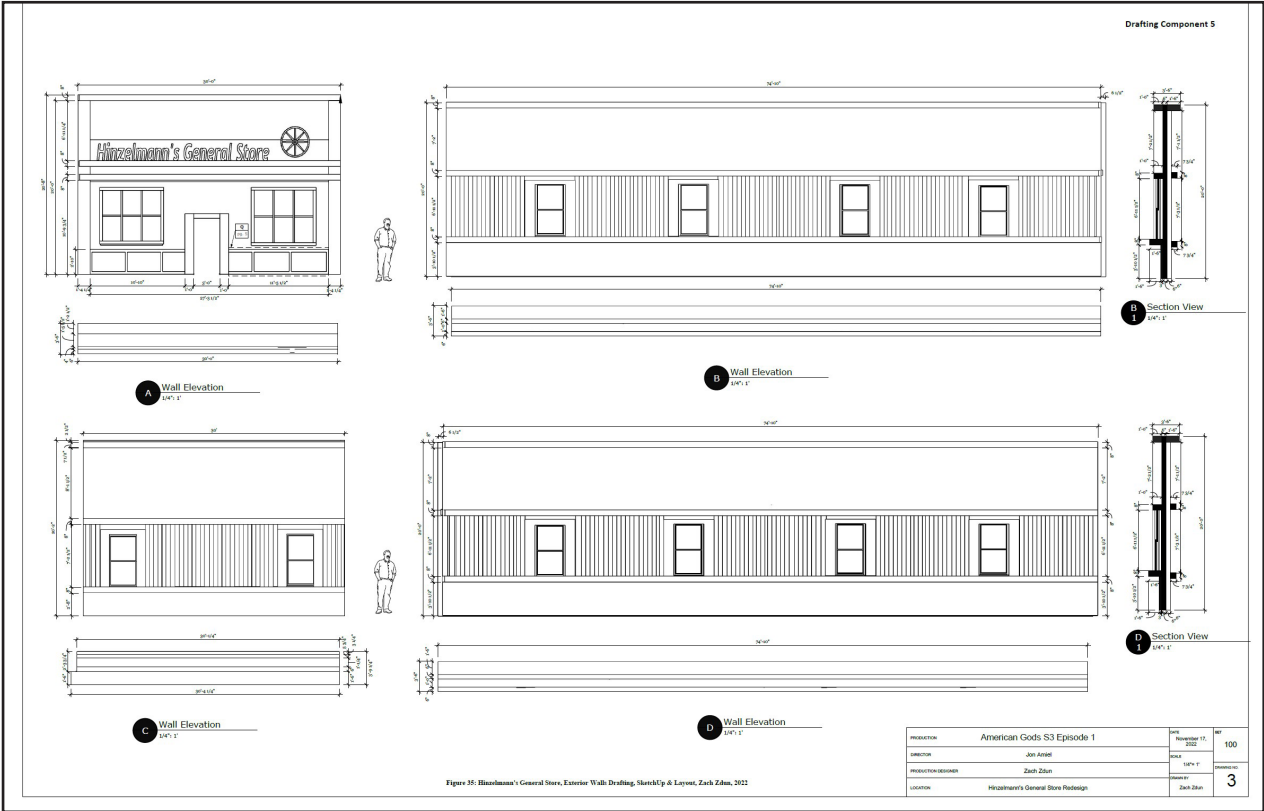
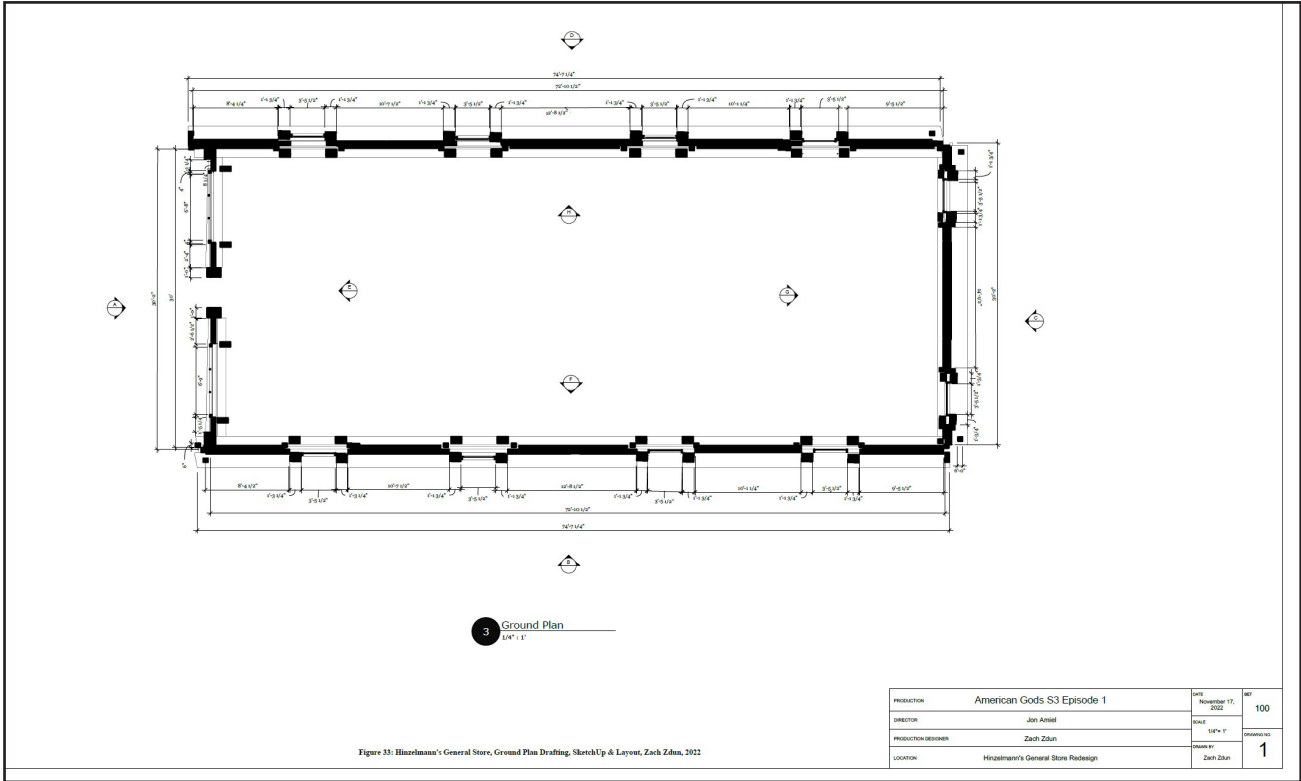


American Gods :
 Renders of Hinzelmann's
 General Store



Select Photoshop Renders for *American Gods*, Season Three Episode One, Hinzelmann's General Store.
 Top : Select Interior Renders, Hinzelmann's General Store
 Bottom : Select Exterior Renders, Hinzelmann's General Store

American Gods Season Three Episode One : Set Drafting for Hinzelmann's General Store



Top Left: Ground Plan

Bottom Left: Window
and Casing Details

Top Right: Exterior Front
Elevations & Section Cuts

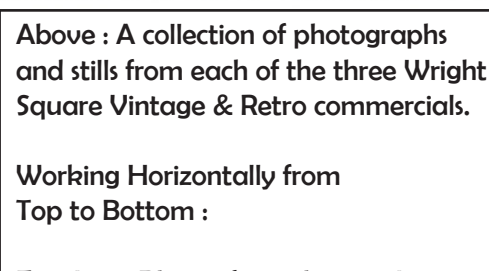
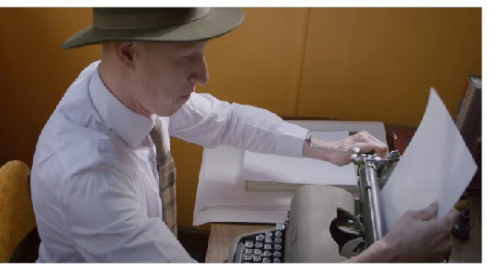
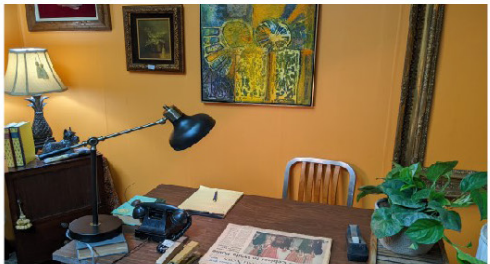
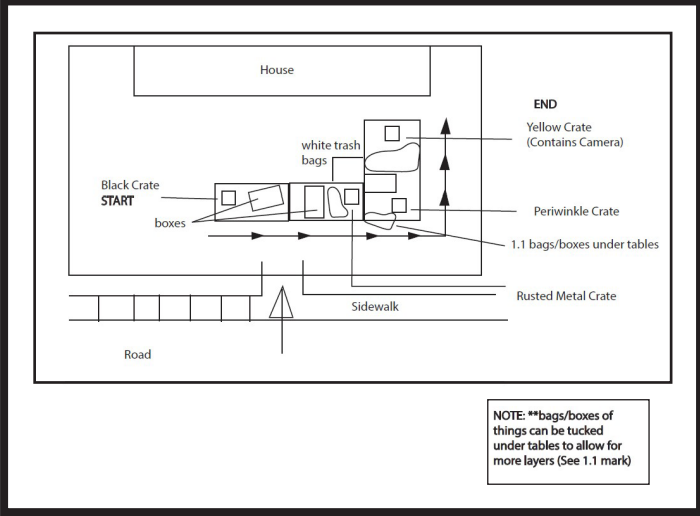
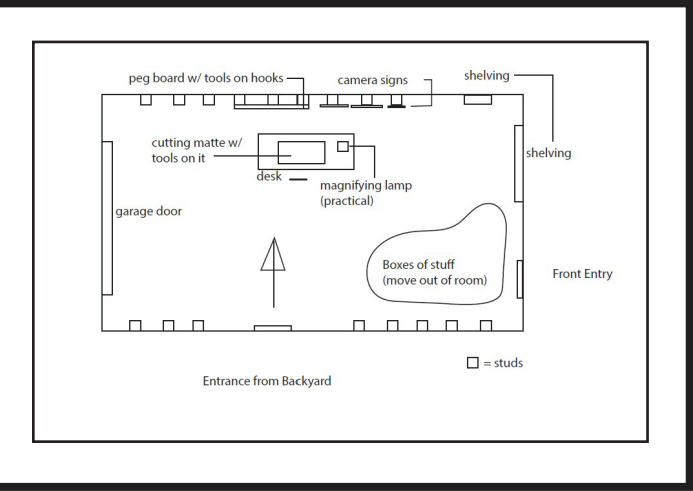
Bottom Right: Interior Front
Elevations & Section Cuts



Wright Square Vintage & Retro Commercials

Director: Greg Biggerstaff
Production Designer: Zach Zdun
Locations: Wright Square Vintage & Retro Mall
& various locations in Savannah, GA

Bottom Left and Middle: Two of the director plans produced for the commercial centered around the camera.



Above : A collection of photographs and stills from each of the three Wright Square Vintage & Retro commercials.

Working Horizontally from Top to Bottom :

First Line: Photos from the jewelry store set in the 1940's. This commercial centered around the bracelet.

Second Line: Photos from the newspaper office. This commercial focused heavily on the 1950's and 1970's and centered round the typewriter.

Third Line: The typewriter in storage and two photos taken from separate set locations (a present-day work room and a 1990's garage sale respectively) of the camera commercial.

Fourth Line: Set photos for commerial centered around the bracelet.

Wright Square Vintage & Retro Mall was looking for a way to generate more customers to their Wright Square locaton in downtown Savannah, Georgia. I was brought onto the project to create the environments behind all three commercials each of which dealt with a specific antique: a bracelet, a camera, and a typewriter.

The commercials were based on specific decades and challenged me to design each space to be period accurate and accenuate the specifc antiques involved.



Above: Recreation of a 1980's Kodak camera ad.
Left: Recreation of a 1990's Nikon camera ad.



Little Women: A SCAD Theatrical Production

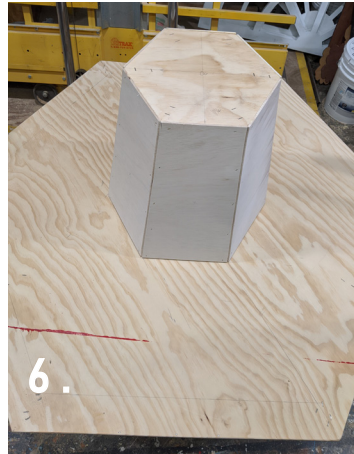
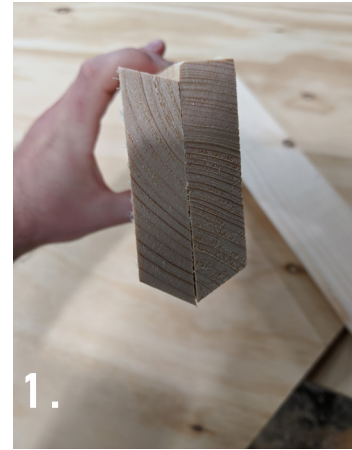


Top Left: SCAD Casting Office Poster for theatrical production of *Little Women*
Bottom Left & Middle Top: Details of completed pouf couch

Directed by: Jay Jaski
Pouf Couch Construction Lead: Jason “Doc” Harrell
Pouf Couch Build Crew: Zach Zdun
Location: Lucas Theatre for the Arts, Savannah, GA



Process Snapshots:



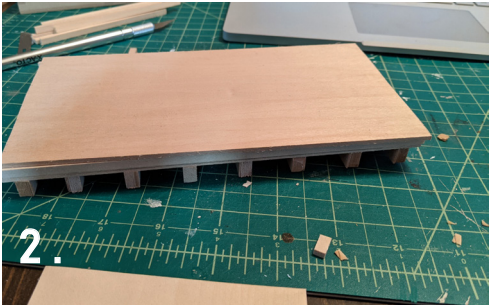
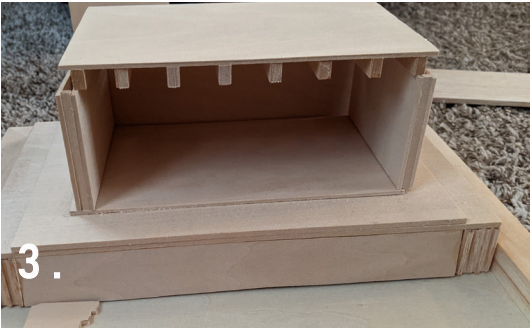


Japanese Temple Model (1/4" Scale)



A quarter-inch scale model that combines traditional basswood model making techniques with that of foam carving, minatures construction, and layered scenic painting to create my version of traditional Japanese Buddhist temples and Shinto shrines.

NOTE: Images 1-6 contain various stages of model construction in the order they were performed.



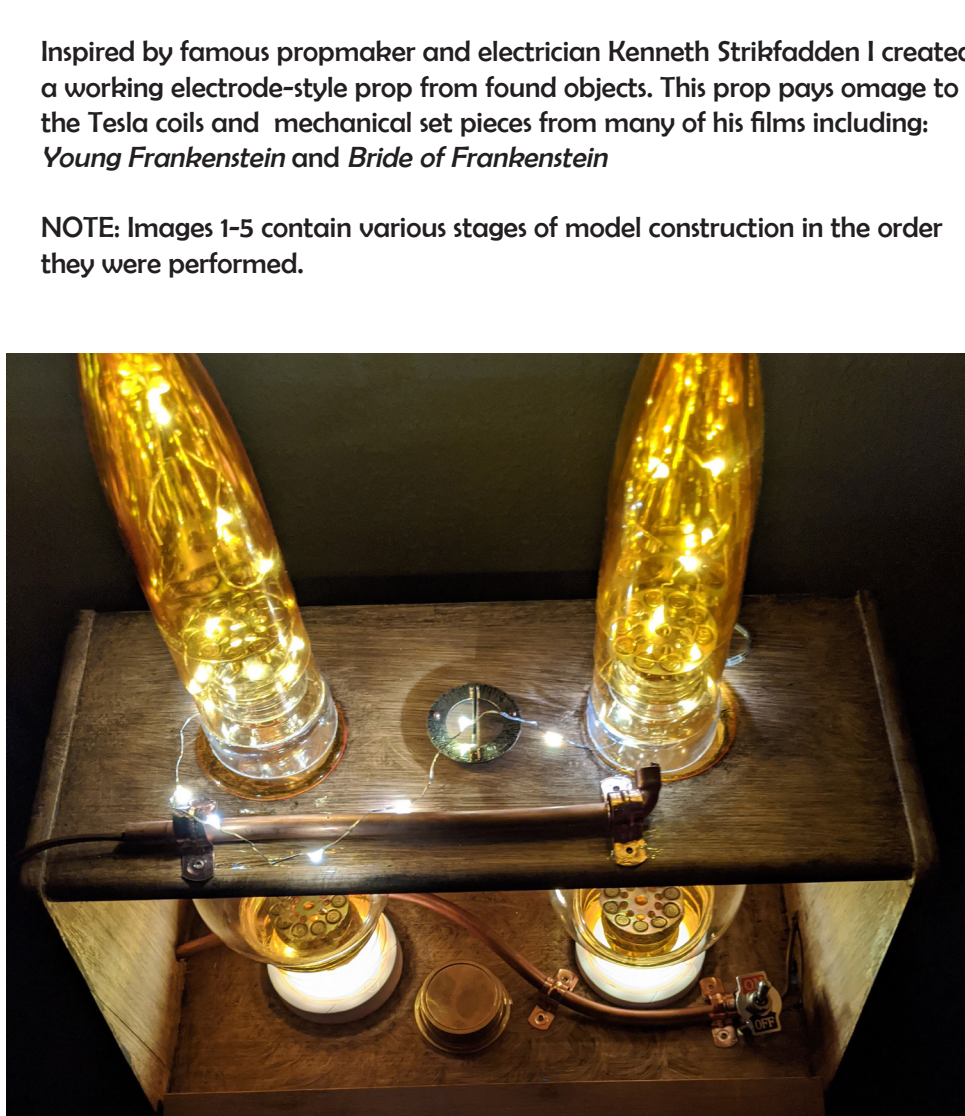
Process Snapshots:



Left: Completed Japanese temple model with landscape

Middle: Close-up of second and third level of Japanese temple model

Bottom Right: Frontal view of completed Japanese temple with landscape



Inspired by famous propmaker and electrician Kenneth Strikfadden I created a working electrode-style prop from found objects. This prop pays omage to the Tesla coils and mechanical set pieces from many of his films including: *Young Frankenstein* and *Bride of Frankenstein*

NOTE: Images 1-5 contain various stages of model construction in the order they were performed.

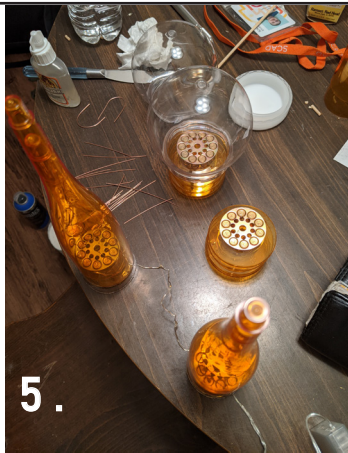
Above: Completed Strikfadden prop with front hatch open (day).

Bellow: Close-up of inner workings of Strikfadden prop (night).

Process Snapshots:

Middle: Completed Strikfadden prop with front hatch closed (day).

Right: Top down view of completed Strikfadden prop (night).





Skidaway Island State Park
Interpretive Center



9. Process Snapshots:



8.

During my time at Skidaway Island State Park in Savannah, Georgia I worked with fellow Georgia State Park employees and a Virginia-based installation team to design and construct a series of enclosures and displays for the park's 2,100 sq. foot Interpretive Center. Creation of this exhibit took place from November 2020 to the Interpretive Centers opening in March 2021.

The space includes: a replica skeleton of a Prehistoric Ground Sloth, six snake enclosures, one aquatic tank filled with turtles and the other with fish, all of whom are native to the region.

NOTE: Images 1-9 contain various stages of construction and are a reflection of this project's overall progression.

Left : Photo of completed giant ground sloth display.
Middle : Photo of four completed snake enclosures and one aquatic tank.



1.



2.



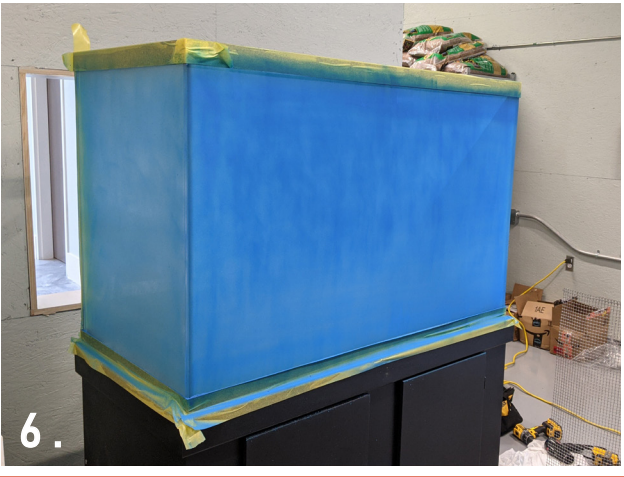
3.



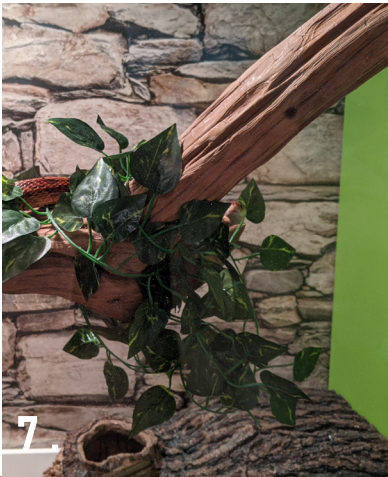
4.



5.

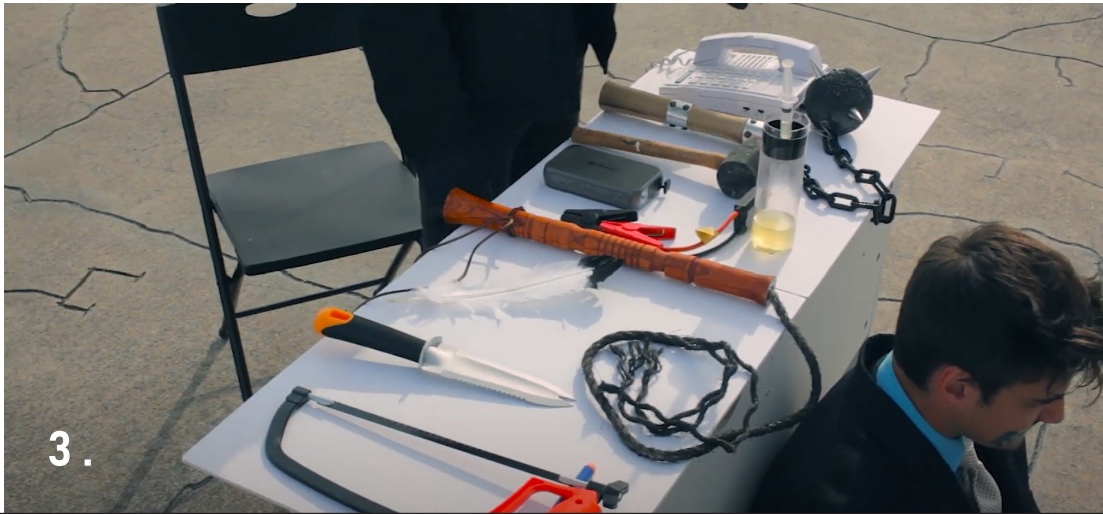


6.

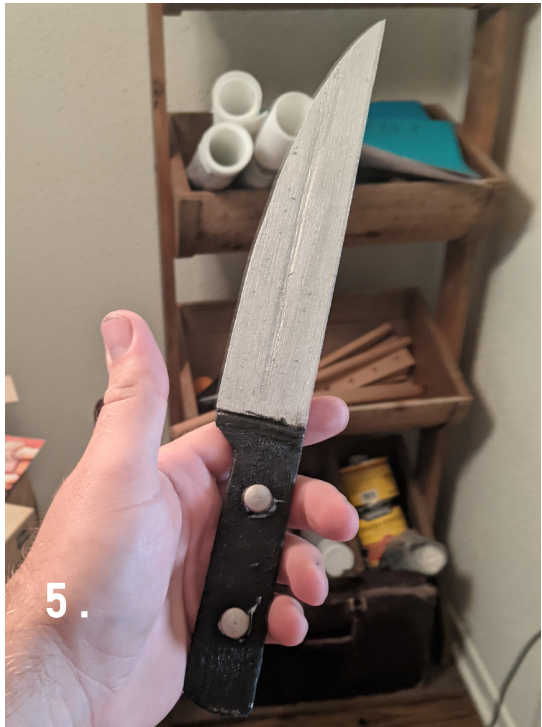


7.

Spotlight: Weapons Properties



NOTE : All process photos are represented without numbers to the left of the finished property and contain various stages of prop construction.



Prop Weapon #1 (Top Left) :
Mase and process shots from the
comedy short "Black Market Hotline."

Prop Weapon #2 (Top Right):
Prop dagger with process shots.

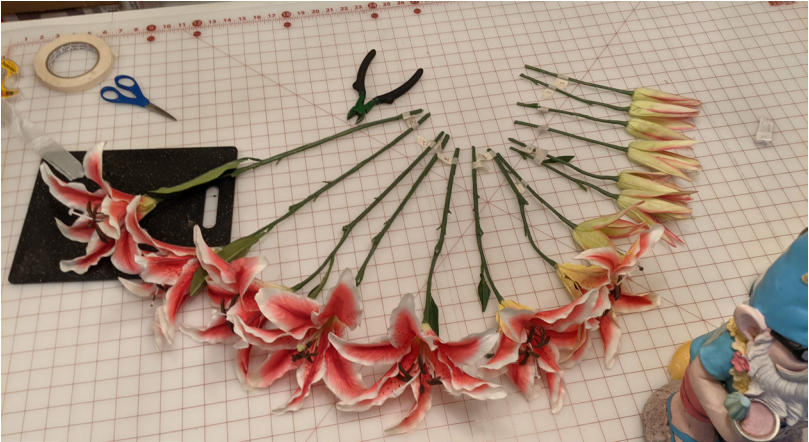
Prop Weapon #3 (Bottom Left) :
Bull whip and process shots from the
comedy short "Black Market Hotline."

Prop Weapon #4 (Middle) :
Flay knife from "A Woman's Love
Is Brief."

Prop Weapon #5 (Bottom Right) :
Kitchen knife and process shots from
the feature *Trapped*.



Process Snapshots:



Directed by: Melissa Chilson & Pong Tulyathan
 Artist: Alexandra Elizabeth Lijadov, aka Majorlilkween
 Art Department: Daniel Rivera Aponte, Carolyn Holcombe,
 Ken Misaki, Juan Velsua, and Zach Zdun
 Location: Savannah, GA

Left: Photo of completed install for music
 video featuring Alexandra Lijadov aka
 Majorlilkween.
 Photo courtesy of Ken Misaki

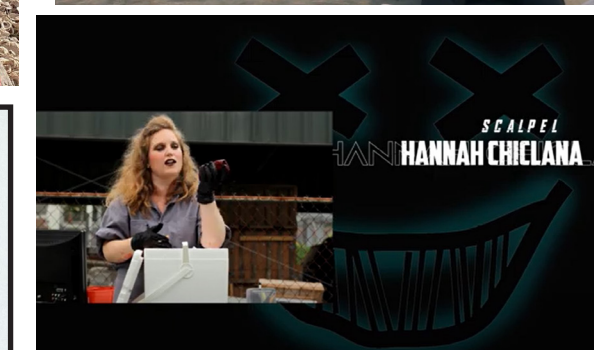
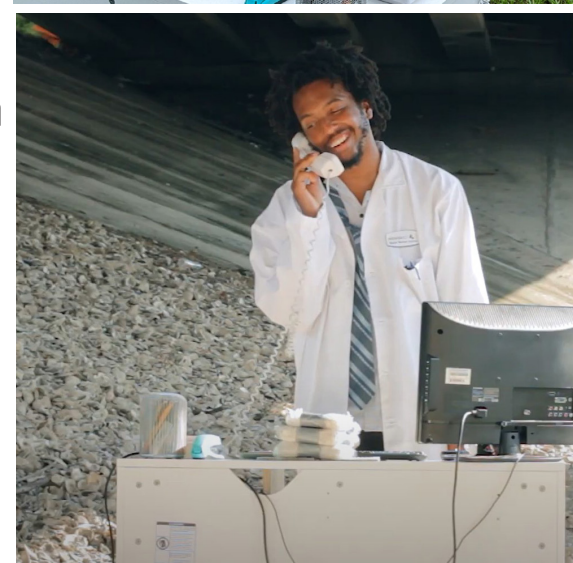
Middle: Completed elements of install : the
 practical effect of a lily in bloom, the turfed
 platform to elevate our performer, and the
 large-scale foam lily worn by performer.

Bottom Right: Images from 'The Story of
 Big Pimpin' Music Video. Images courtesy
 of Ken Misaki.

Specific Roles Performed : Location Scout, Set Construction, Buyer,
 Propmaker, and Fabricator

NOTE: Images 1-6 contain various stages of construction and are a
 reflection of this production's overall progression.

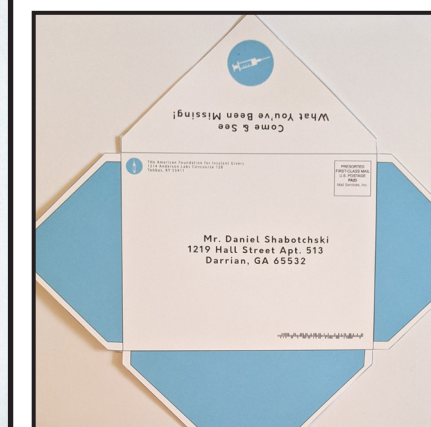
Black Market Hotline



Left :
Suture played by Pittra Munir
wearing name tag and covered
in fake blood.

Middle Top :
Dan played by Stephen Breaux
in kitchen and close-ups of
pharmacy business card.

IT Rep played by Kat Glaser
with name tag.



Middle Bottom :
D & M Rep played by Deshawn Mason
and prop bundles of cocaine, also
pictured customer played by Laura
Mason and director Brenden Davis.

Logos and marks associated with each
character (used on each name tag and
in credits).

Right :
IT Rep Kat Glaser and Grave Digger
played by Hannah Rice on location.

Credits depicting Scalpel
played Hannah Chiclana.

The assassin Gare Bear played by Jack
Caron and his target Brenden Davis.

One of the many pharmaceutical
envelopes addressed to Dan.

Spotlight: Graphic Design & Film

Directed by: Brenden Davis
Production Designer: Zach Zdun
Created by: Mazel Tov Cocktail Comedy
Location: Savannah, GA

Logline : The lengths one man will go to obtain insulin
and all of the wacky characters he encounters.

Working with the sketch comedy group Mazel Tov
Cocktail Comedy, I was charged with not only scouting
and set dressing each location, but I also created the
props and graphics tailored to each character.



“A Woman's Love Is Brief”

Directed by: Amelia Ray
 Production Designer: Zach Zdun
 SCAD Student Production
 Location: Savannah, GA

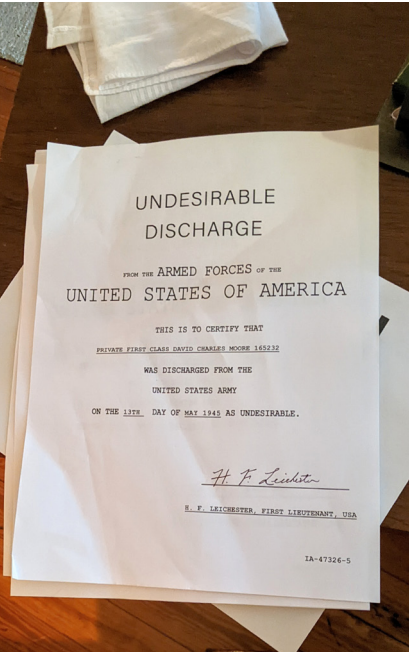
Logline : Based on Joanna Newsom’s “Only Skin,” this production tells the tale of a woman falling out of love with a man who is haunted by his actions during WWII.



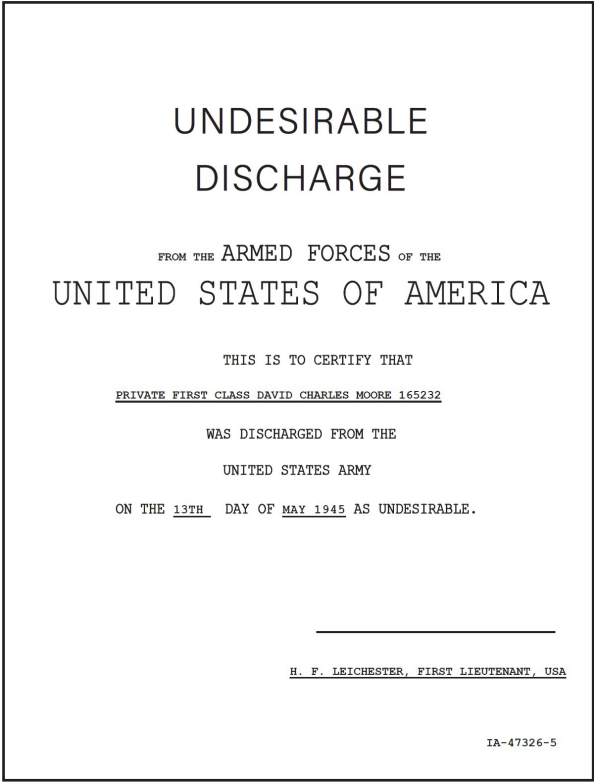
Left: Photo of David (played by Max Schusterman) in bedroom. Photo from other section of interior bedroom - night.

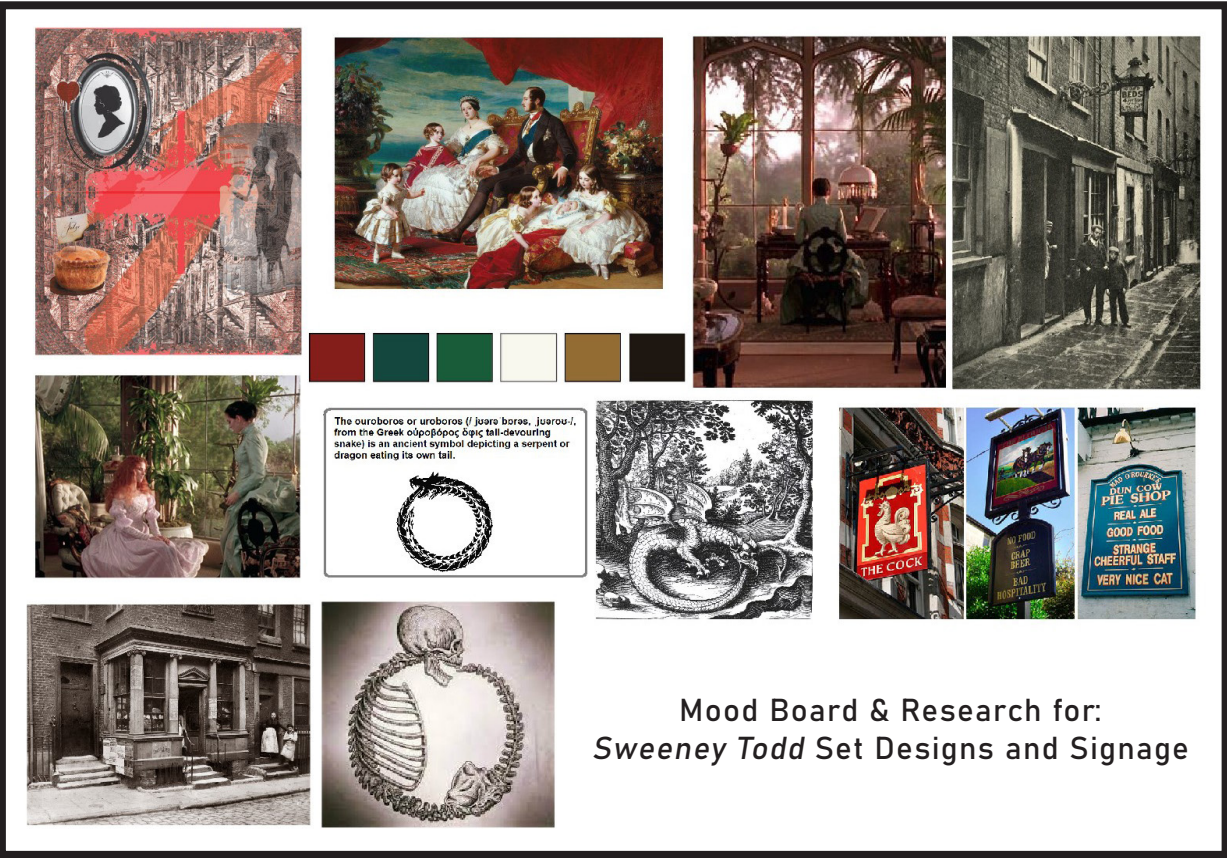
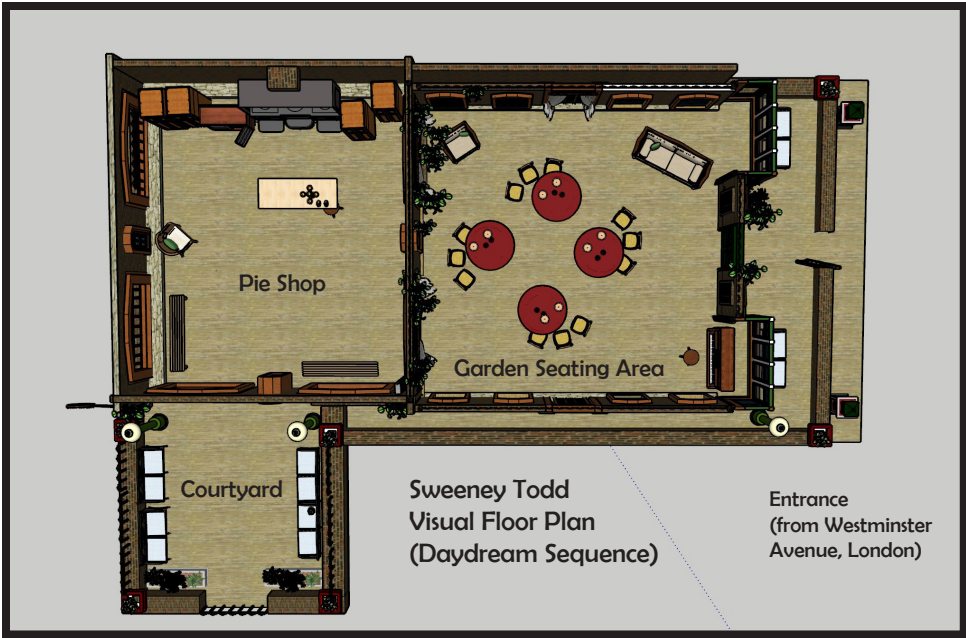


Middle Top: Photo of Jo (played by Kendahl Cooper) in interior bedroom - day.
 Middle Bottom: Daydream sequence of Max remembering the tramas of WWII.

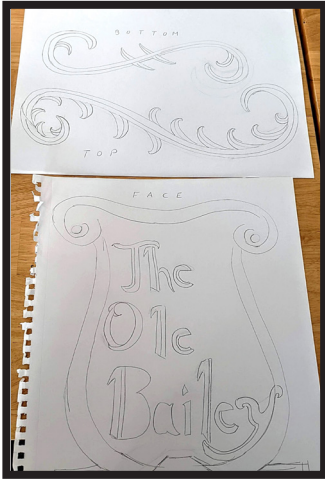


Middle Bottom: Detail photos of prop cane pole and Army discharge paperwork.





Sweeney Todd : Concept Rendering of Pie Shop & Garden Seating Area + Tavern Signage



Top Left and Middle: Concept renders of pie shop and garden seating area for *Sweeney Todd*.

Middle and Bottom Right : Completed tavern sign 'The Olde Bailey' and process shots from *Sweeney Todd*.

This interpretation of *Sweeney Todd*, drew me to the daydream sequence between Mrs. Lovett and Toby. Inspired by the eerily idyllic qualities of Francis Ford Coppola's *Dracula* and fusing it with literal symbolism found in ouroboros; I chose a color palette based on Franz Xaver Winterhalter's *The Royal Family in 1846* making for a sweetly sick take on this classic Victorian penny dreadful.

The tavern signage combines classic hand lettering with bright, yet rustic Olde English curb appeal. This is ever apparent in the scenic painting, oak framework, and metal floral finials.

DESIGNER MAKER STORYTELLER



DESIGNER MAKER STORYTELLER

www.zachzdun.com zzdun754@gmail.com 715-897-4580
@zachzdun linkedin.com/in/zach-zdun-205869ab

<i>The Index</i> in order of appearances:
Harris Houses: A Case Study on Craftsman Bungalows
Techniques in Moldmaking
<i>American Gods</i> Redesigns :
Henning's Sporting Goods
Hinzelmann's General Store
Wright Square Vintage & Retro Commercial
<i>Little Women</i> : SCAD Theater Prod.
Japanese Temple Model
Strikfadden-Inspired Prop
Skidaway Island State Park Interpretive Center
Spotlight: Weapons Properties
"The Story of Big Pimpin' " Music Video
Black Market Hotline
"A Woman's Love Is Brief"
<i>Sweeney Todd</i>